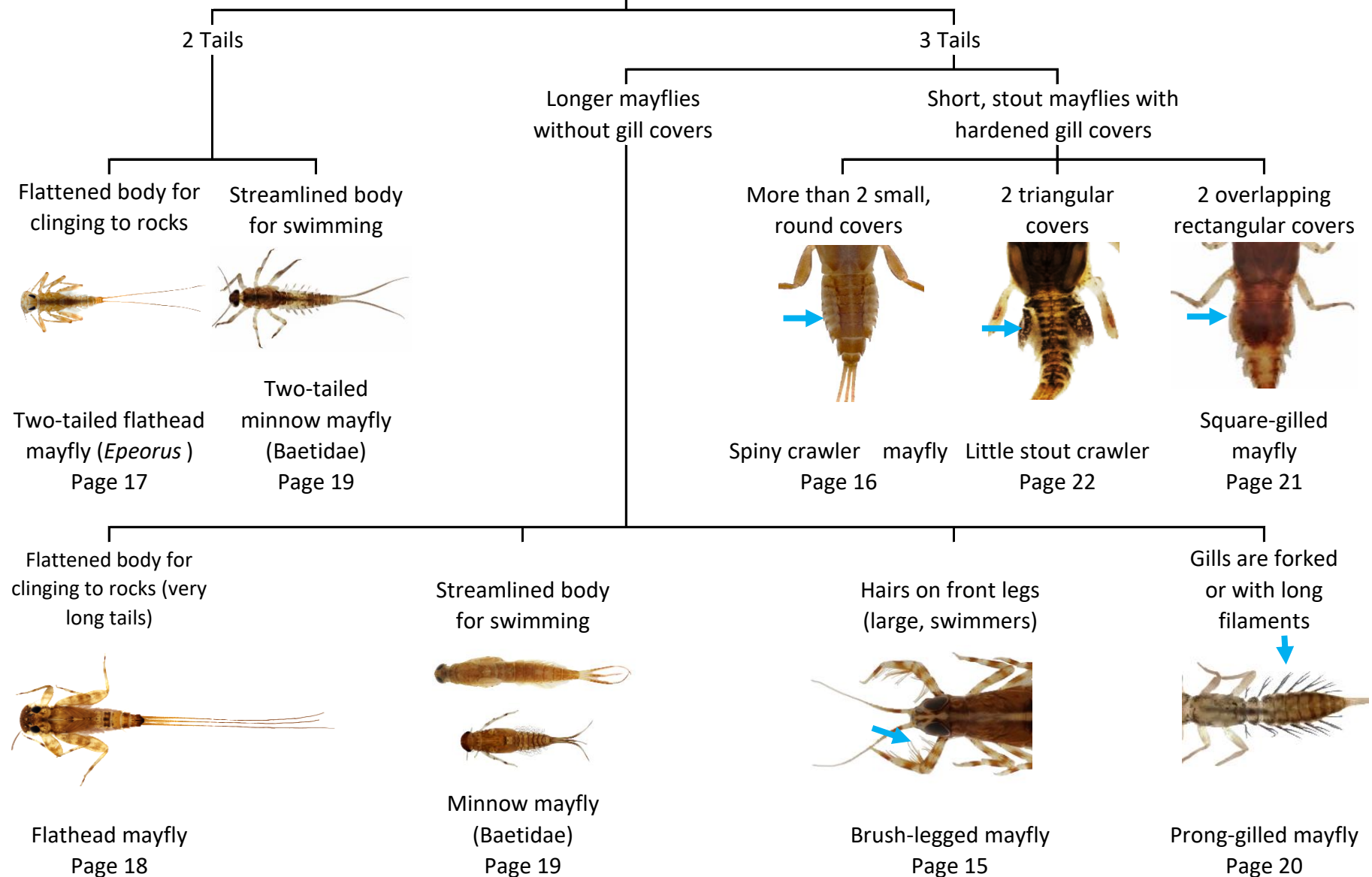


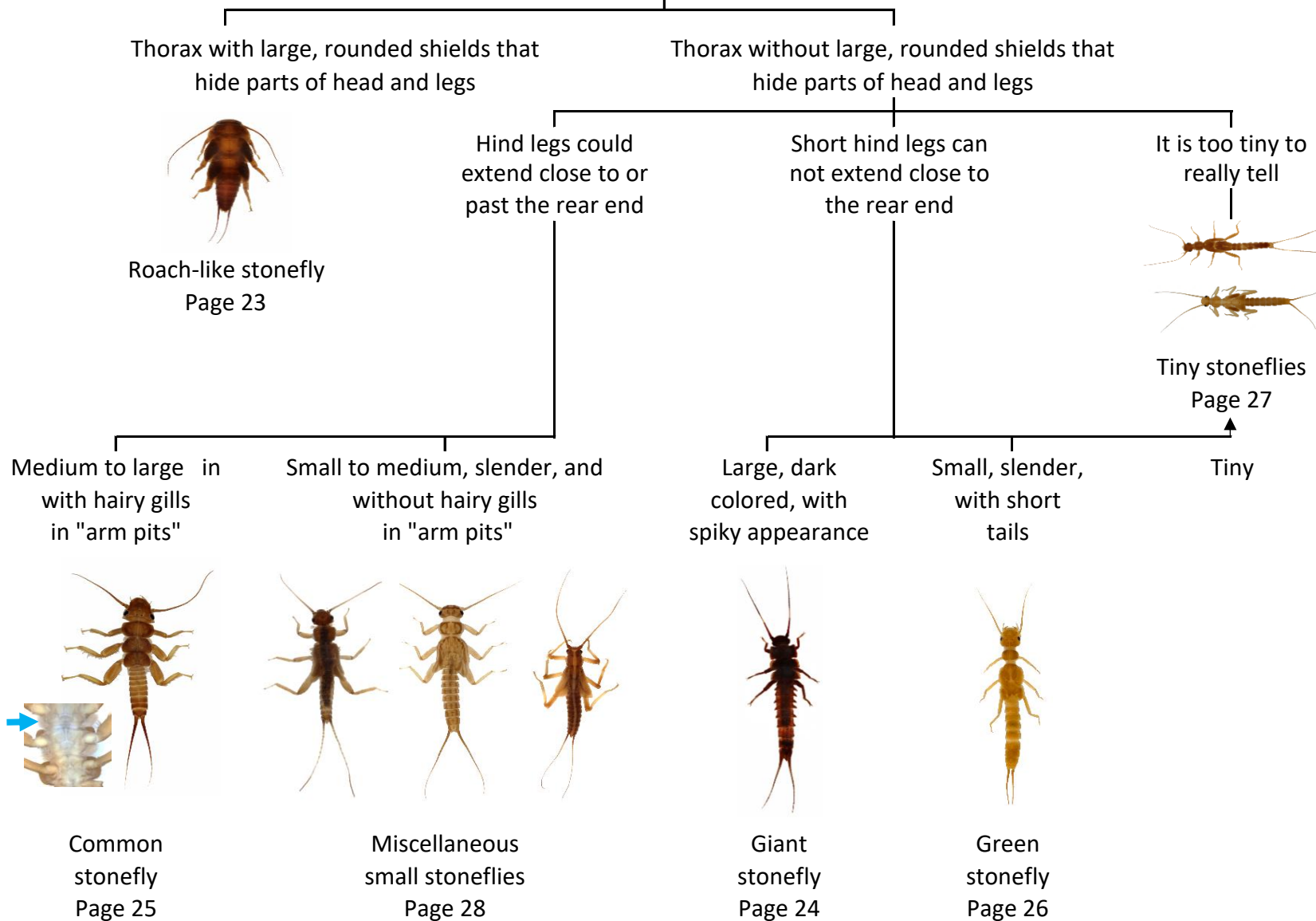
\*If you are not sure about an ID, then put it in the "Minnow" group

# MAYFLIES\*



\*If you are not sure about an ID, then put it in the "Miscellaneous Small" group

# STONEFLIES\*



\*If you are not sure about an ID, then put it in the "Other" group

**CADDISFLIES\***

Full plates on the back of all three thoracic segments. C-shaped body with bushy gills on underside of abdomen

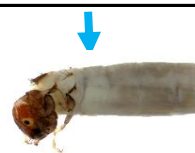


Netspinning  
Page 35

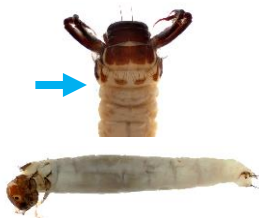
Full plates on the back of the first and second thoracic segments



No hump on back of first abdominal segment

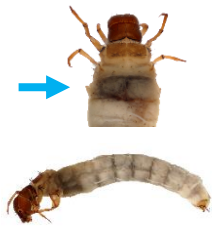


No bumps on side of first segment



Log cabin  
Page 31

Bumps on side of first segment

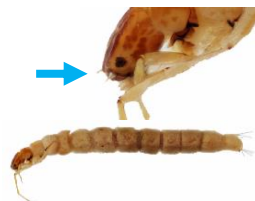


Wood panel  
Page 32

Hump on back of first abdominal segment



Can see antennae (but still small)



Long-horned  
Page 33

Can't see the antennae



Other or Unknown\*  
Page 37

Full plate on the back of only the first thoracic segment



Prolegs on rear end are well-developed, long body



Small and slender



Tubenet  
Page 34

Prolegs on rear end are small, stout body



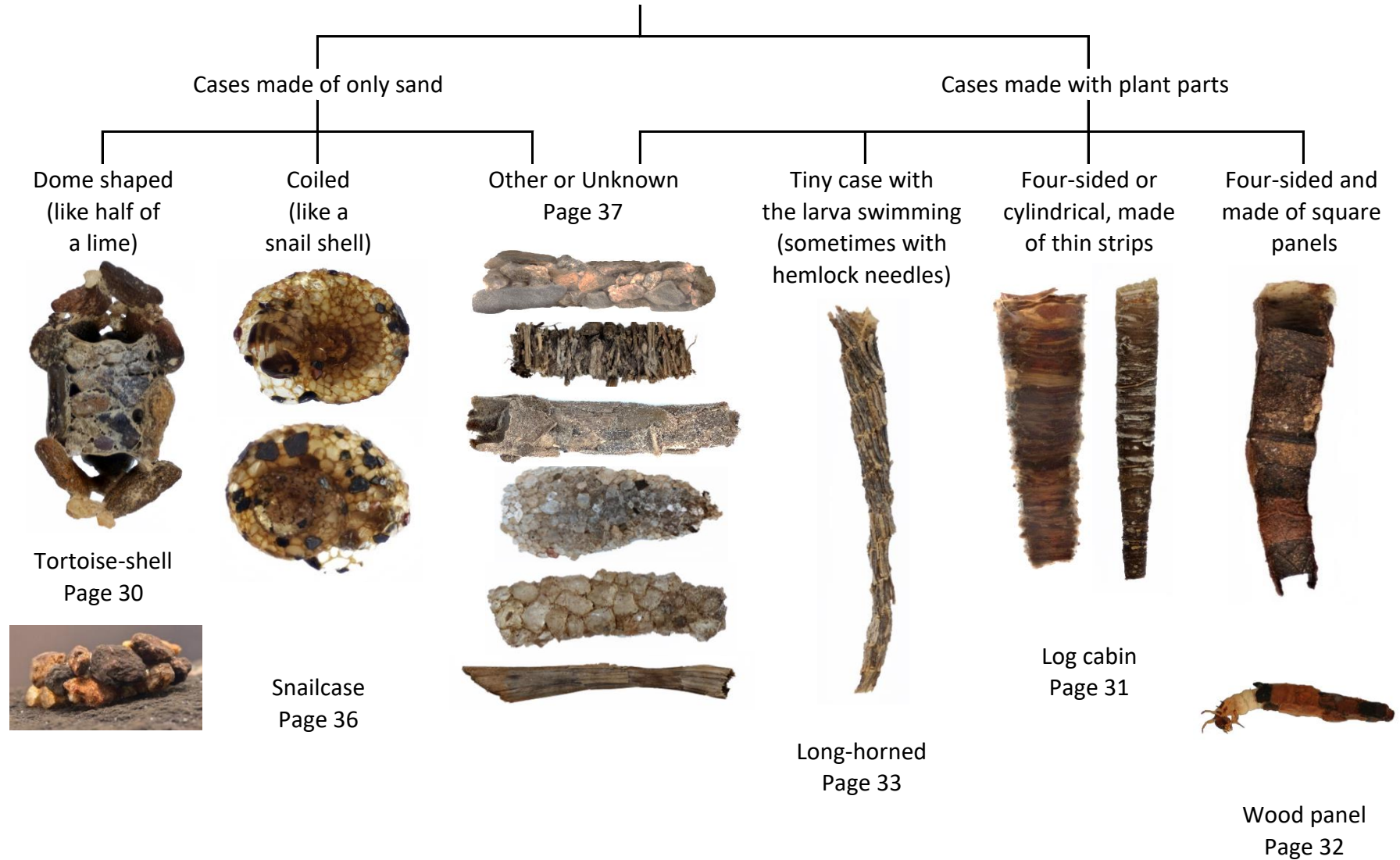
Tortoise shell  
Page 38

Large and thick



Free-living  
Page 29

## CADDISFLY CASES



There are hundreds of different kinds of caddisfly cases. If you can't match a case to one of these pictures, then put it in the "Other or Unknown" group.